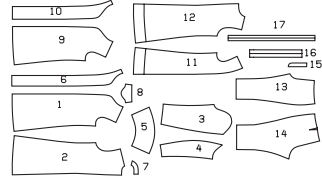


PIRAT, CASANOVA • PIRATE,
CASANOVA • PIRATA, CASANOVA



ABCD: semi-fitted,
semi-ajusté, semi-ajustado.

Sizes Tailles • Tallas	US Eur.	45 ins / 114 cm								55 ins / 140 cm							
		36 46	38 48	40 50	42 52	44 54	46 56	48 58	36 46	38 48	40 50	42 52	44 54	46 56	48 58		
AD	yds	3 1/4	3 1/2	3 1/2	3 3/4	4	4 1/8	4 1/8	2 5/8	2 5/8	2 5/4	2 3/4	3 1/4	3 3/8	3 3/8		
	m	2.90	3.15	3.20	3.35	3.55	3.65	3.65	2.40	2.40	2.45	2.50	2.90	3.00	3.00		
AD Lining Doublure • Forro	yds	2	2	2 1/2	2 5/8	2 5/8	2 7/8	2 7/8	1 7/8	2	2	2	2 1/8	2 1/8	2 1/8		
	m	1.75	1.80	2.20	2.25	2.25	2.55	2.55	1.70	1.75	1.80	1.80	1.85	1.90	1.90		
B	yds	2 1/4	2 1/4	2 3/8	2 3/8	2 3/8	2 3/8	2 3/8	1 8/8	1 8/8	1 9/8	1 9/8	1 9/8	2 0/8	2 0/8		
	m	2.00	2.00	2.05	2.10	2.10	2.25	2.25	1.85	1.85	1.90	1.90	1.95	2.05	2.05		
B Lining Doublure • Forro	yds	1 1/8	1 1/4	1 3/4	1 3/4	1 7/8	2	2	1 1/8	1 1/8	1 1/8	1 1/4	1 1/4	1 1/4	1 1/4		
	m	1.00	1.10	1.50	1.50	1.70	1.80	1.80	1.00	1.00	1.00	1.05	1.05	1.10	1.10		
C	yds	1 3/4	1 3/4	1 7/8	1 7/8	1 7/8	1 7/8	1 7/8	1 1/2	1 5/8	1 5/8	1 3/4	1 3/4	1 7/8	1 7/8		
	m	1.60	1.60	1.65	1.65	1.65	1.70	1.70	1.30	1.35	1.35	1.55	1.60	1.70	1.70		

→ with nap • avec sens • con dirección

★ without nap • sans sens • sin dirección

Wool fabrics,
satin,
brocade
A also velvet

Lainage, satin,
brocart,
A velours également

Géneros de lana,
satén, brocado
A también terciopelo

ABCD:
Interfacing
tripleure
entretela

AD: 24" x 2 5/8 yds (60 cm x 2.35 m)
B: 24" x 2 1/8 yds (60 cm x 2.15 m)
C: 24" x 1 1/4 yds (60 cm x 0.95 m)

C: 36-40 (46-50): 6 1/2" (16 cm),
42-48 (52-58): 7" (18 cm)

Waistband interfacing
Entoilage pour ceinture
Entretela para pretinas

1 1/2" (3.5 cm)

BC: B: 10x
C: 1x

AD: 6" (15 cm)
48" (1.20 m)

AD: 1 1/2" (3.5 cm)
D: 1" (2.5 cm)

A: 4 3/4 yds (4.30 m)
D: 4 3/8-4 7/8 yds (4.00-4.40 m)