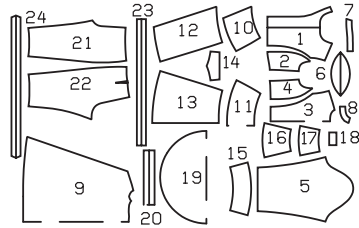


PRINCE, MOZART
PRINCE, AMADEUS
PRÍNCIPE, MOZART



AB: fitted, ajusté, ajustado.

		45 ins / 114 cm						55 ins / 140 cm							
Sizes	US	6	7	8	9	10	11	12	6	7	8	9	10	11	12
Tailles • Tallas	Eur.	116	122	128	134	140	146	152	116	122	128	134	140	146	152
A I	yds	2 ¹ / ₈	2 ¹ / ₈	2 ¹ / ₈	2 ¹ / ₈	2 ¹ / ₄	2 ¹ / ₄	2 ³ / ₈	1 ³ / ₄	1 ³ / ₄	1 ³ / ₄	1 ³ / ₄	1 ³ / ₄	1 ⁷ / ₈	1 ⁷ / ₈
	m	1.85	1.85	1.85	1.90	1.95	2.00	2.05	1.55	1.55	1.55	1.60	1.60	1.65	1.70
		→	→	→	→	→	→	→	★	★	★	★	★	★	★
A II + III, each par • cada	yds	3/4	3/4	7/8	7/8	7/8	7/8	7/8	3/4	3/4	7/8	7/8	7/8	7/8	7/8
	m	0.60	0.60	0.65	0.65	0.70	0.70	0.75	0.60	0.60	0.65	0.65	0.70	0.70	0.75
		→	→	→	→	→	→	→	→	→	→	→	→	→	→
B	yds	2 ¹ / ₈	2 ¹ / ₈	2 ¹ / ₈	2 ¹ / ₄	2 ⁵ / ₈	2 ⁵ / ₈	2 ⁵ / ₈	1 ³ / ₄	1 ³ / ₄	1 ⁷ / ₈	2	2 ¹ / ₄	2 ³ / ₈	2 ³ / ₈
	m	1.85	1.85	1.90	2.00	2.30	2.35	2.45	1.60	1.60	1.65	1.75	2.00	2.05	2.10
		→	→	→	→	→	→	→	→	→	→	→	→	→	→
B Contrasting fabric • Tissu garniture • Tela de guarnición	yds	3/8	3/8	3/8	3/8	3/8	3/8	3/8	3/8	3/8	3/8	3/8	3/8	3/8	3/8
	m	0.25	0.25	0.25	0.25	0.25	0.25	0.25	0.25	0.25	0.25	0.25	0.25	0.25	0.25
		→	→	→	→	→	→	→	→	→	→	→	→	→	→
AB Pants Pantalón • Pantalón	yds	7/8	7/8	1	1	1 ¹ / ₈	1 ¹ / ₂	1 ⁵ / ₈	7/8	7/8	1	1	1	1	1
	m	0.80	0.80	0.85	0.85	0.95	1.30	1.35	0.80	0.80	0.85	0.85	0.90	0.90	0.90
		→	→	→	→	→	→	→	→	→	→	→	→	→	→

→ with nap • avec sens • con dirección

★ without nap • sans sens • sin dirección

Costume satin,
panne velvet
B Contrasting
fabric: Batiste

Satin de carnaval
Panne de velours
B Tissu de
garniture: batiste

Satén de carnaval,
terciopelo de
pana,
B Tela de
guarnición:
batista

AB: Interfacing • triplure • entretela
A: 24" x 20" (60 cm x 50 cm)
B: 24" x 28" (60 cm x 70 cm)

Waistband interfacing ↑
 Entoilage pour ceinture ↑ 1" (2.5 cm)
 Entretela para pretinas ↓

A: ↑ 2" (5 cm):
 ↓ 1¹/₂ - 1³/₄ yds. (1.50-1.70 m)

↑ 3/8" (0.5 cm):
 ↓ 5¹/₈ - 6¹/₈ yds. (5.10-6.20 m)

B: ↑ 3/8" (2 cm):
 ↓ 3¹/₂ - 4¹/₂ yds. (3.10-3.70 m)

1x **A** 6x
B 10x

7" (16 cm)

Dacron stuffing
 Ouate dacron • guata dacron

↑ 1¹/₂" (3 cm): 16" (0.40 m)
 ↓ 2³/₄" (7 cm):
 36" - 40" (0.90-1.00 m)