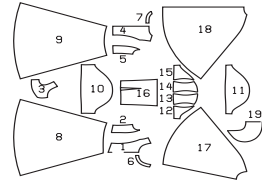


PRINCESS, SNOW WHITE
PRINCESSE, BLANCHE-NEIGE
PRINCESA, BLANCANIEVES



AB: semi-fitted, semi-ajusté, semi-ajustado.

Sizes Tailles • Tallas	US Eur.	45 ins / 114 cm						55 ins / 140 cm					
		4 104	5 110	6 116	7 122	8 128	9 134	4 104	5 110	6 116	7 122	8 128	9 134
A I	yds	2 1/2	2 5/8	2 7/8	3 1/4	3 1/2	4	4 1/8	2	2 1/2	2 5/8	2 3/4	2 3/4
	m	2.15	2.30	2.55	2.90	3.20	3.55	1.65	1.75	2.15	2.25	2.35	2.45
A II	yds	2 1/8	2 1/4	2 5/8	3 1/8	3 1/2	4	1 3/4	1 3/4	2 1/4	2 3/8	2 1/2	2 5/8
	m	1.90	2.00	2.25	2.75	3.20	3.55	1.45	1.55	2.00	2.10	2.20	2.30
B I	yds	2 1/4	2 3/8	2 5/8	2 5/8	2 3/4	2 7/8	1 3/4	1 3/4	1 6/8	2 1/4	2 3/8	2 1/2
	m	2.00	2.10	2.25	2.35	2.45	2.60	1.50	1.55	1.65	1.95	2.05	2.20
B II	yds	2 1/4	2 3/8	2 3/8	3 1/8	3 1/2	4	1 3/8	1 3/4	1 7/8	2 1/8	2 1/2	2 3/8
	m	1.95	2.10	2.30	2.75	3.20	3.55	1.40	1.50	1.65	1.90	2.15	2.40
B III	yds	1 3/4	1 3/4	1 7/8	2	2 1/4	2 1/2	1 3/8	1 1/2	1 5/8	1 3/4	1 3/4	1 7/8
	m	1.45	1.55	1.70	1.80	1.95	2.15	1.20	1.25	1.35	1.50	1.60	1.70
B IV	yds	1/2	1/2	1/2	1/2	1/2	1/2	1/2	1/2	1/2	1/2	1/2	1/2
	m	0.35	0.35	0.35	0.35	0.35	0.35	0.35	0.35	0.35	0.35	0.35	0.35

→ with nap • avec sens • con dirección

★ without nap • sans sens • sin dirección

AI: Organza
AII, B:
 Costume silk,
 costume satin

AI: Organza
AII, B: Soie de
 carnaval, satin
 de carnaval

AI: Organza
AII, B: seda
 de carnaval,
 satén de
 carnaval

AB: Interfacing
 triplure • entretela
A: 24" x 1 1/2 yds.
 (60 cm x 100 cm)
B: 24" x 1 1/2 yds.
 (60 cm x 145 cm)

A:
 3 1/2 - 5 yds.
 (3.20 m - 4.90 m)

B: 1x

A: Flower • Fleur
 Flores 5x

A: 1/4" (0.7 cm)

A: 1/4" (0.7 cm)

A

B

B