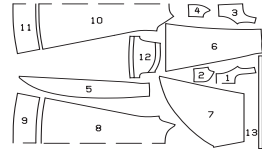


JOSEPHINE

A: close fitting, très ajusté, muy ajustado.
B: semi-fitted, semi-ajusté, semi-ajustado.



Sizes Tailles • Tallas	US Eur.	55 ins / 140 cm								59 ins / 150 cm							
		10 36	12 38	14 40	16 42	18 44	20 46	22 48	10 36	12 38	14 40	16 42	18 44	20 46	22 48		
A I	yds	2 ⁷ / ₈	2 ⁷ / ₈	3 ¹ / ₈	3 ¹ / ₈	3 ³ / ₈	3 ³ / ₈	2.95	2.95	2 ¹ / ₂	2 ⁵ / ₈	2 ⁵ / ₈	2 ³ / ₄	2 ¹ / ₈	3 ¹ / ₈	3 ¹ / ₈	
	m	2.60	2.60	2.80	2.80	2.95	2.95	→	→	2.20	2.25	2.30	2.50	2.60	2.80	2.80	
A II	yds	1/2	1/2	1/2	5/8	5/8	5/8	5/8	1/2	1/2	1/2	5/8	5/8	5/8	5/8	5/8	
	m	0.40	0.40	0.40	0.45	0.45	0.45	0.45	0.40	0.40	0.40	0.45	0.45	0.45	0.45	0.45	
A Lining Doublure • Forro	yds	2 ⁵ / ₈	2 ³ / ₄	2 ³ / ₄	2 ³ / ₄	2 ⁷ / ₈	3	3									
	m	2.35	2.45	2.45	2.50	2.55	2.65	2.65									
B	yds	3 ³ / ₈	3 ³ / ₈	3 ¹ / ₂	3 ¹ / ₂	3 ¹ / ₂	3 ³ / ₄	3 ³ / ₄	3 ³ / ₈	3 ³ / ₈	3 ³ / ₈	3 ¹ / ₂	3 ¹ / ₂	3 ¹ / ₂	3 ¹ / ₂	3 ¹ / ₂	
	m	3.00	3.00	3.10	3.15	3.15	3.35	3.35	3.00	3.00	3.00	3.05	3.05	3.20	3.20	3.20	
C Scarf Écharpe • Chal	yds	1 ¹ / ₂	1 ¹ / ₂	1 ¹ / ₂	1 ¹ / ₂	1 ¹ / ₂	1 ¹ / ₂	1 ¹ / ₂									
	m	1.30	1.30	1.30	1.30	1.30	1.30	1.30									

→ with nap • avec sens • con dirección

★ without nap • sans sens • sin dirección

A: Brocade, velvet
B and C: batiste, crêpe fabrics

A: Brocart, velours
B et C: batiste, crêpe

A: Brocado, terciopelo
B y C: batista, géneros de crep

A: Interfacing • triplure
entretela
23³/₈" x 47¹/₂"
(60 x 120 cm) 12 x

19¹/₂" (50 cm)
1¹/₈ - 2¹/₄ yds (1,70 - 2,00 m)

5 yds (4,50 m) ↑ 1⁵/₈" (4 cm)

55¹/₄" - 63" (140 - 160 cm) ↓ 2⁵/₈" (6,5 cm)

B

4¹/₈ - 4⁷/₈ yds
(3,70 - 4,40 m) ↑ 5¹/₈" (1,5 cm)

2³/₄ - 3³/₈ yds
(2,50 m - 3,00 m) ↓ 1¹/₄" (0,7 cm)

C

1¹/₂ yds (1,30 m)

A

B

C