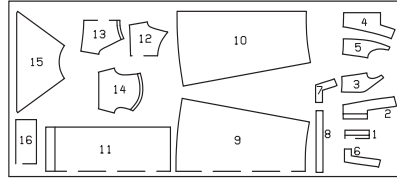


**LADY OF THE CASTLE  
CHATELAINE  
DAMA DEL CASTILLO**



close fitting, très ajusté, muy ajustado.

Sizes Tailles • Tallas	US Eur.	45 ins / 114 cm								55 ins / 140 cm							
		10 36	12 38	14 40	16 42	18 44	20 46	22 48	24 50	10 36	12 38	14 40	16 42	18 44	20 46	22 48	24 50
I	yds	7/8	7/8	7/8	1	1	1	1	7/8	7/8	7/8	1	1	1	1	1	1
	m	0.80	0.80	0.80	0.85	0.85	0.85	0.90	0.80	0.80	0.80	0.85	0.85	0.85	0.90	0.90	0.90
II	yds	3/4	3/4	3/4	3/4	7/8	7/8	7/8	5/8	5/8	5/8	5/8	3/4	3/4	3/4	3/4	
	m	0.60	0.60	0.60	0.60	0.65	0.65	0.70	0.45	0.45	0.45	0.45	0.55	0.55	0.60	0.60	
III	yds								3/2	3/2	3/2	3/2	3/2	3/2	3/2	3/2	
	m								3.20	3.20	3.20	3.20	3.20	3.20	3.25	3.25	
IV	yds	2 3/4	2 3/4	2 3/4	3	3 1/8	3 3/8	3 1/2	2	2	2	2 5/8	2 5/8	2 5/8	2 5/8	2 5/8	
	m	2.45	2.45	2.45	2.65	2.75	2.95	3.20	1.75	1.75	1.75	2.35	2.35	2.40	2.40	2.40	
Veil Voile • Velo	yds								1 3/8	1 3/8	1 3/8	1 3/8	1 3/8	1 3/8	1 3/8	1 3/8	
	m								1.20	1.20	1.20	1.20	1.20	1.20	1.20	1.20	

→ with nap • avec sens • con dirección

★ without nap • sans sens • sin dirección

**I, III:**  
Panne velvet

**II:** novelty fabrics

**IV:** satin

**Veil:** organza

**I, III:** Panne de velours

**II:** tissu structuré

**IV:** satin

**Voile:** organza

**I, III:** Terciopelo fino

**II:** telas de fantasía

**IV:** satén

**Velo:** organza

**Interfacing • triplure**  
entretela  
**24" x 1 1/2 yds.**  
**(60 x 140 cm)**

**Decorative hooks**  
Agrafes décoratives  
Ganchos decorativo **12x**

**Stuffing**  
Quatine à rembourrer  
Guata de relleno

**20"**  
**(50 cm)**

**1 1/2"**  
**(4 cm)**

**2% - 3 yds. (2,40 - 2,70 m)**

**3/4"**  
**(2 cm)**

**3% - 3 1/2 yds. (2,80 - 3,10 m)**

**1/4"**  
**(0,7 cm)**