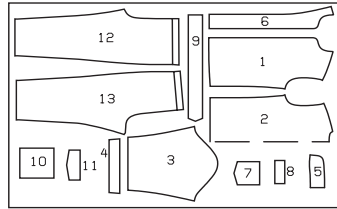


**PYJAMAS**  
**PYJAMA • PIJAMA**

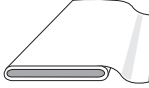
**AB:** loose fitting, ample, amplio.  
**Shoulder • Epaule • Hombros:**  
extra broad, très large, muy anchos.



Misses • Dames • Señoras Sizes Tailles • Tallas	US Eur.	36 ins / 90 cm			36 ins / 114 cm			55 ins / 140 cm		
		12/14 38/40	16/18 42/44	20/22 46/48	12/14 38/40	16/18 42/44	20/22 46/48	12/14 38/40	16/18 42/44	20/22 46/48
<b>A</b>	yds	5 <sup>1</sup> / <sub>4</sub>	6 <sup>1</sup> / <sub>2</sub>	6 <sup>1</sup> / <sub>2</sub>	4 <sup>1</sup> / <sub>4</sub>	4 <sup>3</sup> / <sub>4</sub>	5 <sup>1</sup> / <sub>8</sub>	3 <sup>1</sup> / <sub>2</sub>	4 <sup>1</sup> / <sub>4</sub>	4 <sup>1</sup> / <sub>4</sub>
	m	4.80	5.85	5.85	3.85	4.30	4.60	3.20	3.90	3.90
		*	*	*	*	*	*	*	*	*
Men's • Hommes • Caballeros Sizes Tailles • Tallas	US Eur.	34/36	38/40	42/44	34/36	38/40	42/44	34/36	38/40	42/44
		44/46	48/50	52/54	44/46	48/50	52/54	44/46	48/50	52/54
<b>B</b>	yds	5 <sup>1</sup> / <sub>2</sub>	6 <sup>1</sup> / <sub>8</sub>	6 <sup>1</sup> / <sub>8</sub>	4 <sup>3</sup> / <sub>8</sub>	4 <sup>3</sup> / <sub>4</sub>	5 <sup>1</sup> / <sub>8</sub>	3 <sup>1</sup> / <sub>2</sub>	4 <sup>1</sup> / <sub>4</sub>	4 <sup>1</sup> / <sub>4</sub>
	m	4.95	5.60	5.60	4.00	4.30	4.60	3.20	3.90	3.90
		*	*	*	*	*	*	*	*	*

★ without nap • sans sens • sin dirección

IMPORTANT! extra fabric required to match plaids • ATTENTION! Pour les tissus à carreaux compter un métrage supérieur • ATENCION! Para telas a cuadros se necesita mayor cantidad.



Silk  
Rayon  
Flannel


  

Soie  
Viscose  
Flanelle


  

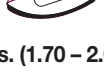
Seda  
Viscosa  
Franela

**AB:** Interfacing • triplure • entretela  
**24" x 1<sup>1</sup>/<sub>4</sub> yds. (60 x 115 cm)**



1<sup>1</sup>/<sub>8</sub> - 2<sup>1</sup>/<sub>4</sub> yds. (1.70 - 2.00 m)

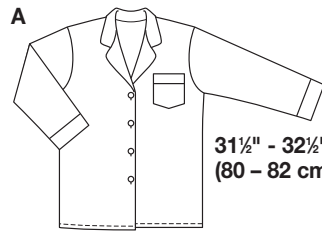

4x



↑ ↓


5<sup>5</sup>/<sub>8</sub>" (1.5 cm)

**A**




31<sup>1</sup>/<sub>2</sub>" - 32<sup>1</sup>/<sub>2</sub>"  
(80 - 82 cm)

**A**

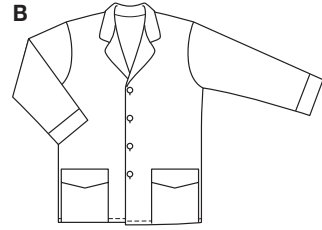


**AB**




40<sup>3</sup>/<sub>4</sub>" - 43"  
(103 - 109 cm)

**B**



45<sup>5</sup>/<sub>8</sub>" - 52" (116 - 132 cm)



19" - 20<sup>1</sup>/<sub>2</sub>" (48 - 52 cm)