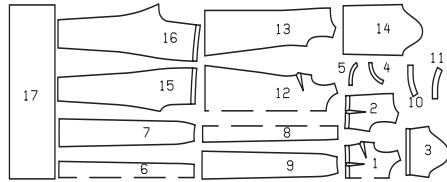


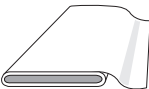
INDIAN • INDIENNE • INDIO

AB: fitted, ajusté, ajustado.



Sizes Tailles • Tallas	US Eur.	45 ins / 114 cm								55 ins / 140 cm							
		8 34	10 36	12 38	14 40	16 42	18 44	20 46	8 34	10 36	12 38	14 40	16 42	18 44	20 46		
AB Sari		1³/₈ yds x 6¹/₈ yds / 115 cm x 550 cm															
A Skirt + Top Jupe + Haut • Falda + Cuerpo	yds	2 ⁷ / ₈	2 ⁷ / ₈	2 ⁷ / ₈	2 ⁷ / ₈	3	3	3	2 ¹ / ₄	2 ¹ / ₄	2 ¹ / ₄	2 ⁵ / ₈	2 ⁵ / ₈	2 ⁷ / ₈	3		
	m	2.60	2.60	2.60	2.60	2.65	2.65	2.70	1.95	1.95	1.95	2.25	2.40	2.60	2.65		
B Lining Doublure • Forro	yds	3	3 ¹ / ₄	3 ¹ / ₂	4 ¹ / ₄	4 ¹ / ₄	4 ¹ / ₄	4 ¹ / ₂	2 ⁵ / ₈	2 ⁵ / ₈	2 ⁵ / ₈	2 ⁷ / ₈	3	3	3 ¹ / ₈		
	m	2.70	2.90	3.20	3.90	3.90	3.90	4.10	2.30	2.30	2.35	2.60	2.65	2.70	2.80		

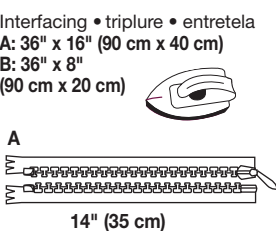
→ with nap • avec sens • con dirección



AB: 1 sari
45" x 6 yds
(1.15 m x 5.50 m)
A: Dupion silk

AB:
Interfacing • triplure • entretela

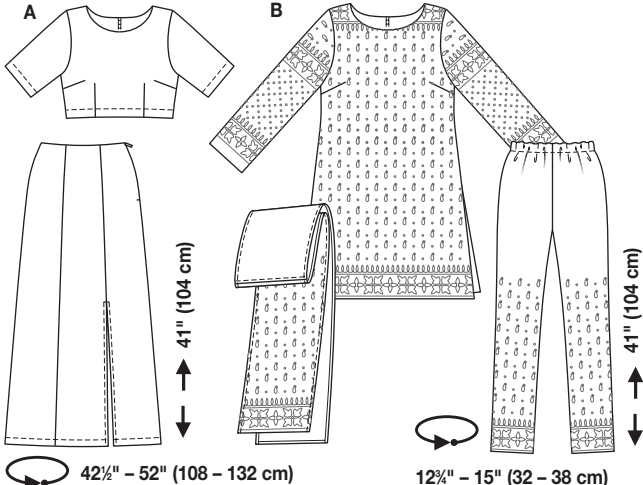
A: 36" x 16" (90 cm x 40 cm)
B: 36" x 8" (90 cm x 20 cm)



A
14" (35 cm)

B
30" - 38" (75 - 95 cm)
1" (2.5 cm)

AB: 1 Sari
(1,15 m x 5,50 m)
A: soie dupion



A
41" (104 cm)
42¹/₂" - 52" (108 - 132 cm)

B
41" (104 cm)
12¹/₂" - 15" (32 - 38 cm)

© by Verlag Anne Burda GmbH & Co. KG, Am Kestendamm 2, 77652 Offenburg, Germany
E-Mail: pattern@burda.com www.burdafashion.com