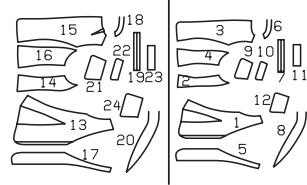


VEST • GILET • CHALECO

AB: fitted, ajusté, ajustado.



		45 ins / 114 cm						55 ins / 140 cm					
Sizes	US	12	14	18	22	26	30	12	14	18	22	26	30
Tailles • Tallas	Eur.	38	40	44	48	52	56	38	40	44	48	52	56
A	yds	1 ⁵ / ₈	1 ⁵ / ₈	1 ³ / ₄	2	2 ¹ / ₄	2 ³ / ₈	1 ³ / ₈	1 ³ / ₈	1 ³ / ₈	1 ³ / ₄	1 ⁷ / ₈	1 ⁷ / ₈
	m	1.40	1.40	1.60	1.75	1.95	2.10	1.20	1.20	1.20	1.45	1.65	1.65
B	yds	1 ⁵ / ₈	1 ³ / ₈	1 ³ / ₈	1 ³ / ₄	1 ³ / ₄	2	1 ¹ / ₄	1 ¹ / ₄	1 ¹ / ₄	1 ¹ / ₂	1 ¹ / ₂	1 ¹ / ₂
	m	1.15	1.15	1.20	1.50	1.60	1.75	1.10	1.10	1.10	1.25	1.30	1.30

→ with nap • avec sens • con dirección

Gabardine, linen, denim fabrics, lightweight wools

Gabardine, lin, toile de jean, cotonnade légère

Gabardina, lino, géneros tejados, telas batanadas ligeras

AB:
Interfacing • triplure • entretela
AB: 36" - 32"
(90 cm x 80 cm)

Remnant of lining
Reste de doublure
Retal de forro

7x

Sizes 12-20 (38-46):
44" - 50" (110-125 cm)

Sizes 22-32 (48-58):
52" - 59" (130-150 cm)

↑↓
1¹/₈" (4 cm)

A

↑↓
37³/₄" - 60¹/₄" (96-153 cm)

B

↑↓
19³/₄" - 23¹/₄" (50-59 cm)