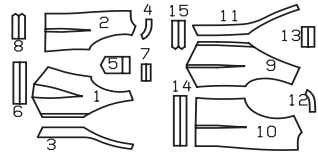


VEST • GILET • CHALECO

ABCD: semi-fitted,
semi-ajusté, semi-ajustado.



		45 ins / 114 cm								55 ins / 140 cm							
Women • Dames • Señoras Sizes Tailles • Tallas	US	6	8	10	12	14	16	18	6	8	10	12	14	16	18		
	Eur.	32	34	36	38	40	42	44	32	34	36	38	40	42	44		
AB	yds	1	1	1	1	1 1/8	1 1/8	1 1/8	7/8	7/8	7/8	7/8	7/8	7/8	7/8		
	m	0.90	0.90	0.90	0.90	0.95	0.95	0.95	0.80	0.80	0.80	0.80	0.80	0.80	0.80		
		*	*	*	*	*	*	*	*	*	*	*	*	*	*		
Men Hommes • Caballeros Sizes Tailles • Tallas	US	34	36	38	40	42	44	34	36	38	40	42	44				
	Eur.	44	46	48	50	52	54	44	46	48	50	52	54				
CD	yds	1 1/4	1 1/4	1 1/4	1 1/4	1 5/8	1 5/8	1 1/8	1 1/8	1 1/8	1 1/8	1 1/8	1 1/8				
	m	1.10	1.10	1.10	1.10	1.35	1.35	0.95	0.95	0.95	0.95	1.00	1.00				
		*	*	*	*	*	*	*	*	*	*	*	*				

★ without nap • sans sens • sin dirección

Lightweight
denims, linen,
cotton fabrics

ABCD:
Interfacing • triplure
entretela
24" x 28"
(60 cm x 70 cm)

AB: 41"-49"
(105-125 cm)
CD: 49"-53"
(125-135 cm)

AC: 4x
BD: 6x

D 34-38 (44-48): 5" (12 cm)
40-44 (50-54): 5 1/2" (14 cm)

↑ (4 cm)
↓ 1 1/2"

Toile de jean
légère, lin,
cotonnade

Telas ligeras
tejanas, lino,
géneros de
algodón

A **B** **C** **D**

AB: 18 1/8" - 19 1/4"
(46-49 cm)

CD: 21 3/4" - 23 1/4"
(55-59 cm)