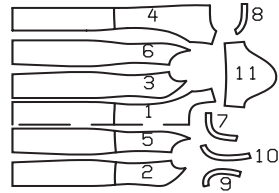


DRESS • ROBE • VESTIDO

ABC: fitted, ajusté, ajustado.



Sizes Tallas • Tallas	US Eur.	45 ins / 114 cm								55 ins / 140 cm							
		12 38	14 40	16 42	18 44	20 46	22 48	24 50	12 38	14 40	16 42	18 44	20 46	22 48	24 50		
A	yds	2 ¹ / ₄	2 ¹ / ₄	2 ¹ / ₄	2 ¹ / ₄	2 ¹ / ₄	2 ¹ / ₄	2 ¹ / ₄	1 ⁵ / ₈	1 ⁵ / ₈	1 ⁵ / ₈	2 ¹ / ₈	2 ¹ / ₈	2 ¹ / ₈	2 ¹ / ₈		
	m	2.00	2.00	2.00	2.00	2.00	2.00	2.00	1.35	1.35	1.35	1.90	1.90	1.90	1.90		
B	yds	2 ¹ / ₄	2 ¹ / ₄	2 ¹ / ₄	2 ⁵ / ₈	2 ⁵ / ₈	2 ⁵ / ₈	2 ⁵ / ₈	1 ⁵ / ₈	1 ⁵ / ₈	1 ⁴ / ₀	2 ¹ / ₄	2 ¹ / ₄	2 ¹ / ₄	2 ¹ / ₄		
	m	2.00	2.00	2.00	2.30	2.30	2.30	2.30	1.40	1.40	1.40	2.00	2.00	2.00	2.00		
C	yds	1 ¹ / ₄	1 ¹ / ₄	1 ¹ / ₄	1 ¹ / ₄	1 ¹ / ₄	1 ¹ / ₄	1 ¹ / ₄	7 ⁷ / ₈	7 ⁷ / ₈	7 ⁷ / ₈	1	1	1	1		
	m	1.05	1.05	1.05	1.05	1.05	1.05	1.05	0.80	0.80	0.80	0.90	0.90	0.90	0.90		

→ with nap • avec sens • con dirección

★ without nap • sans sens • sin dirección

Linen, gabardine, lightweight wools

ABC:
Interfacing • triplure • entretela
AC: 24" x 18" (60 cm x 45 cm)
B: 24" x 12" (60 cm x 30 cm)

AB: 24" (60 cm)
C: 16" (40 cm)

Lin, gabardine, lainages légers

Lino, gabardina, telas ligeras de lana

A

36³/₄" - 37³/₄" (93 - 96 cm)

AB: 37" - 48" (94 - 122 cm)

B

17³/₄" - 19" (45 - 48 cm)

34³/₄" - 46" (88 - 117 cm)

C