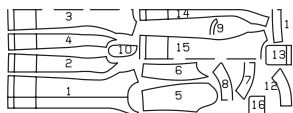


COAT • MANTEAU • ABRIGO

ABCDE: fitted, ajusté, ajustado;
Shoulder • Epaule • Hombros:
average width, normale, normal.



Sizes Tailles • Tallas	US Eur.	45 ins / 114 cm								55 ins / 140 cm							
		10 36	12 38	14 40	16 42	18 44	20 46	22 48	10 36	12 38	14 40	16 42	18 44	20 46	22 48		
A	yds m	3 1/4 2.90	3 1/4 2.90	3 1/4 2.90	3 1/2 3.10	4 3.55	4 3.55	4 3.60	2 5/8 2.30	2 5/8 2.30	2 5/8 2.30	3 2.70	3 1/8 2.75	3 1/8 2.75	3 1/8 2.75		
B	yds m	3 1/8 2.75	3 1/8 2.75	3 1/8 2.75	3 1/8 2.75	3 3/4 3.40	3 3/4 3.40	3 3/4 3.40	2 1/2 2.20	2 1/2 2.20	2 1/2 2.20	3 2.65	3 2.65	3 2.65	3 2.70		
C	yds m	3 1/4 2.85	3 1/4 2.85	3 1/4 2.85	3 1/4 2.85	4 3.55	4 3.55	4 3.55	2 1/2 2.20	2 1/2 2.20	2 1/2 2.20	3 2.65	3 2.65	3 2.65	3 2.70		
ABC Lining • Doublure Forro	yds m	2 5/8 2.10	2 5/8 2.10	2 5/8 2.10	2 5/8 2.30	2 5/8 2.35	2 5/8 2.35	2 1/8 2.55	2 1.80	2 1.80	2 1.80	2 1.80	2 1/2 2.15	2 1/2 2.15	2 1/2 2.15		
DE	yds m	3 2.65	3 2.65	3 2.65	3 2.65	3 3/8 3.00	3 3/8 3.00	3 1/2 3.05	2 3/8 2.05	2 3/8 2.05	2 3/8 2.05	2 3/8 2.40	2 3/8 2.40	2 3/8 2.40	2 3/8 2.40		
DE Lining • Doublure Forro	yds m	1 7/8 1.70	1 7/8 1.70	1 7/4 1.70	1 7/8 1.70	2 3/8 2.10	2 3/8 2.10	2 3/8 2.10	1 3/4 1.60	1 3/4 1.60	1 3/4 1.60	1 3/4 1.60	1 7/8 1.70	1 7/8 1.70	1 7/8 1.70		

→ with nap • avec sens • con dirección

Tweed,
fulled fabric,
lightweight
quilted fabrics

Tweed, loden,
tissus
matelassés fins

Tweed,
telas batanadas,
géneros acolcha-
dos
ligeros

Interfacing • triplure
entretela
ABC: 36" x 59"
(90 cm x 150 cm)
DE: 36" x 48"
(90 cm x 120 cm)

ADE: 5 x
B: 6 x
C: 10 x

A: 46 1/2" - 56 3/4"
(118-144 cm)
BC: 45 3/4" - 56"
(116-142 cm)
DE: 43" - 53 1/4"
(109-135 cm)

A: 40 3/4" - 41 3/4" (103-106 cm)
BC: 38 3/8" - 39 3/4" (98-101 cm)
DE: 31 1/2" - 32 3/4" (80-83 cm)