



K4 169 Misses' Dresses and Sash

XS-S-M-L-XL

Pullover, sleeveless dresses have lapped front bodice with stitched pleats, deep V neckline, armholes and necklines finished with narrow hems, elastic in waist casing and flared skirts with length variations. Self fabric sash. **View B:** Racer back bodice.

FABRICS: Designed for stretch knits only with 35% stretch across the grain.

Suggested Fabrics: Jersey, interlock, cotton knit and matte jersey.

STANDARD BODY MEASUREMENTS:

| SIZES: | XS | S | M | L | XL | |
|-------------------|---------------|-----------|-----------|---------------|---------|----|
| Bust | 31 1/2-32 1/2 | 34-35 1/2 | 37-38 1/2 | 40-41 1/2 | 43-45 | " |
| | 80-83 | 86-90 | 94-98 | 102-106 | 110-114 | cm |
| Waist | 22 1/2-23 1/2 | 24 3/4-26 | 27 1/2-29 | 31-33 | 35-37 | " |
| | 57-60 | 63-66 | 70-74 | 79-84 | 89-94 | cm |
| Hip | 32 1/4-34 | 35 1/2-37 | 38 1/2-40 | 41 1/2-43 1/2 | 45-47 | " |
| | 82-86 | 90-94 | 98-102 | 106-110 | 115-120 | cm |
| Back Waist Length | | | | | | |
| | 15 1/2 | 16 | 16 1/2 | 17 | 17 | " |
| | 39 | 41 | 42 | 43 | 43 | cm |

FINISHED GARMENT MEASUREMENTS:

| SIZES: | XS | S | M | L | XL | |
|---|---------------|----------------|---------------|----------------|---------------|--------|
| Finished Length at Center Back From Waist | | | | | | |
| Dress A | 20 1/2 (52.3) | 21 (54) | 21 1/2 (55.3) | 22 (56) | 22 1/2 (57.3) | " (cm) |
| Dress B | 42 (107) | 42 1/2 (108.3) | 43 (109) | 43 1/2 (110.3) | 44 (112) | " (cm) |

MATERIAL REQUIRED: Fabric requirement allows for nap, one-way design or shading. Extra fabric may be needed to match design or for shrinkage.

| SIZES: | XS | S | M | L | XL | |
|---------------------------------|-------------|-------------|-------------|---------|-------------|--------|
| FABRIC 60" (152 cm) WIDE | | | | | | |
| Dress and Sash A | | | | | | |
| | 1 7/8 (1.8) | 1 7/8 (1.8) | 2 (1.9) | 2 (1.9) | 2 1/8 (2.0) | yd (m) |
| Dress and Sash B | | | | | | |
| | 3 1/2 (3.2) | 3 5/8 (3.4) | 3 7/8 (3.6) | 4 (3.7) | 4 1/4 (3.9) | yd (m) |

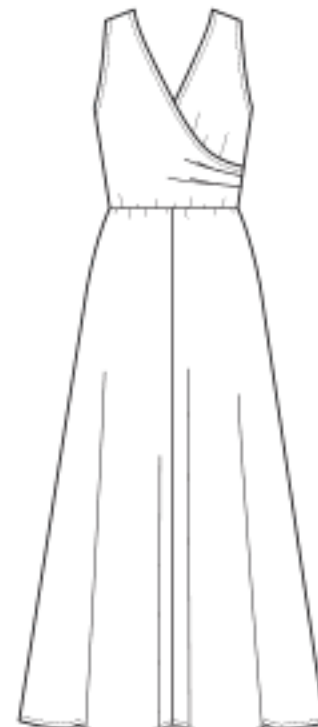
NOTIONS: A, B: 1 1/4 yd (1.2 m) of 1/4" (6 mm) wide elastic.



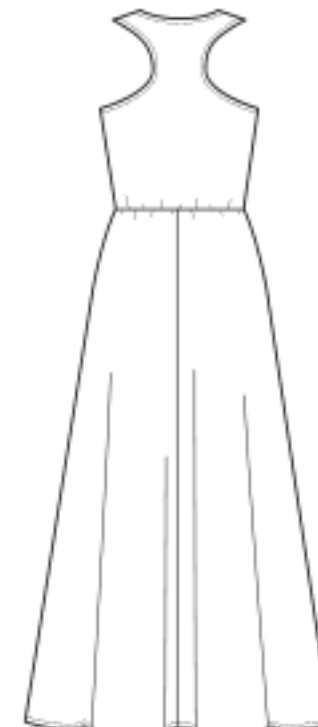
Front A



Back A



Front B



Back B



A B

4" (10 cm) of Knit Fabric should stretch to at least here.

USE FABRIC WITH 35% STRETCH ACROSS THE GRAIN