



K4171 Misses' Dresses

XS-S-M-L-XL

Pullover, sleeveless dresses have armholes finished with self fabric armhole bands, elastic casing with self fabric tie, overlapping skirt fronts with shaped hem. **View A:** Scooped neckline finished with self fabric neckband and elastic across upper back bodice. **View B:** Cowl neck collar.

FABRICS: Designed for stretch knits only with 35% stretch across the grain.

Suggested Fabrics: Interlock, matte jersey, cotton jersey.

STANDARD BODY MEASUREMENTS:

SIZES:	XS	S	M	L	XL	
Bust	31 ¹ / ₂ -32 ¹ / ₂	34-35 ¹ / ₂	37-38 ¹ / ₂	40-41 ¹ / ₂	43-45	"
	80-83	86-90	94-98	102-106	110-114	cm
Waist	22 ¹ / ₂ -23 ¹ / ₂	24 ³ / ₄ -26	27 ¹ / ₂ -29	31-33	35-37	"
	57-60	63-66	70-74	79-84	89-94	cm
Hip	32 ¹ / ₄ -34	35 ¹ / ₂ -37	38 ¹ / ₂ -40	41 ¹ / ₂ -43 ¹ / ₂	45-47	"
	82-86	90-94	98-102	106-110	115-120	cm
Back Waist Length	15 ¹ / ₂	16	16 ¹ / ₂	17	17	"
	39	41	42	43	43	cm

FINISHED GARMENT MEASUREMENTS:

SIZES:	XS	S	M	L	XL	
Finished Length at Center Back From Waist						
Dress A, B	36 ¹ / ₂ (93.3)	37 (94)	37 ¹ / ₂ (95.3)	38 (97)	38 ¹ / ₂ (98.3)	" (cm)

MATERIAL REQUIRED: Fabric requirement allows for nap, one-way design or shading.

Extra fabric may be needed to match design or for shrinkage.

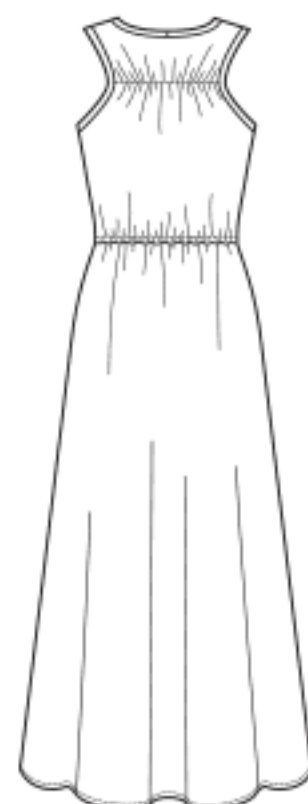
SIZES:	XS	S	M	L	XL	
FABRIC 60" (152 cm) WIDE						
Dress A	2 ⁷ / ₈ (2.7)	3 (2.7)	3 (2.7)	3 ¹ / ₈ (2.9)	3 ¹ / ₈ (2.9)	yd (m)
Dress B	3 ¹ / ₄ (3.0)	3 ¹ / ₄ (3.0)	3 ³ / ₈ (3.1)	3 ³ / ₈ (3.1)	3 ³ / ₈ (3.1)	yd (m)

NOTIONS: A: 1³/₄ yd (1.6 m) of 1/4" (0.6 cm) wide elastic.

B: 1¹/₄ yd (1.2 m) of 1/4" (0.6 cm) wide elastic.



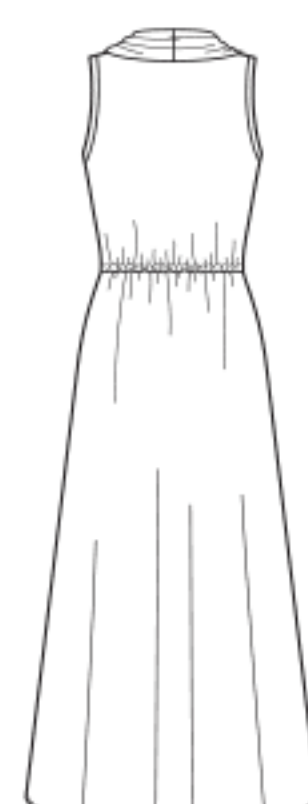
Front A



Back A



Front B



Back B

4" (10 cm) of Knit Fabric should stretch to at least here.

USE FABRIC WITH 35% STRETCH ACROSS THE GRAIN