



K4175 Misses' Tops

XS-S-M-L-XL

Pullover tops have round neckline with a self fabric neckband, bias tape armhole finish and overlapping backs with back bands. **A:** Sleeveless. **B:** Contrast capped sleeve, neckband and single back band.

FABRICS: Designed for light to medium weight woven fabrics.

Suggested Fabrics: Double georgette, crepe de chine, challis, charmeuse.

STANDARD BODY MEASUREMENTS:

SIZES:	XS	S	M	L	XL	
Bust	31 ¹ / ₂ -32 ¹ / ₂	34-35 ¹ / ₂	37-38 ¹ / ₂	40-41 ¹ / ₂	43-45	"
	80-83	86-90	94-98	102-106	110-114	cm
Waist	22 ¹ / ₂ -23 ¹ / ₂	24 ³ / ₄ -26	27 ¹ / ₂ -29	31-33	35-37	"
	57-60	63-66	70-74	79-84	89-94	cm
Hip	32 ¹ / ₄ -34	35 ¹ / ₂ -37	38 ¹ / ₂ -40	41 ¹ / ₂ -43 ¹ / ₂	45-47	"
	82-86	90-94	98-102	106-110	115-120	cm
Back Waist Length	15 ¹ / ₂	16	16 ¹ / ₂	17	17	"
	39	41	42	43	43	cm

FINISHED GARMENT MEASUREMENTS:

SIZES:	XS	S	M	L	XL	
Finished Length at Center Back From Waist						
Top A, B	13 (33)	13 ¹ / ₂ (34.3)	14 (36)	14 ¹ / ₂ (37.3)	15 (38)	" (cm)

MATERIAL REQUIRED: Fabric requirement allows for nap, one-way design or shading.

Extra fabric may be needed to match design or for shrinkage.

SIZES:	XS	S	M	L	XL	
--------	----	---	---	---	----	--

FABRIC 45" (115 cm) WIDE

Top A	2 (1.9)	2 ¹ / ₈ (2.0)	2 ¹ / ₈ (2.0)	2 ¹ / ₄ (2.1)	2 ³ / ₈ (2.2)	yd (m)
Top B	1 ³ / ₄ (1.6)	1 ⁷ / ₈ (1.8)	2 (1.9)	2 ¹ / ₈ (2.0)	2 ¹ / ₄ (2.1)	yd (m)

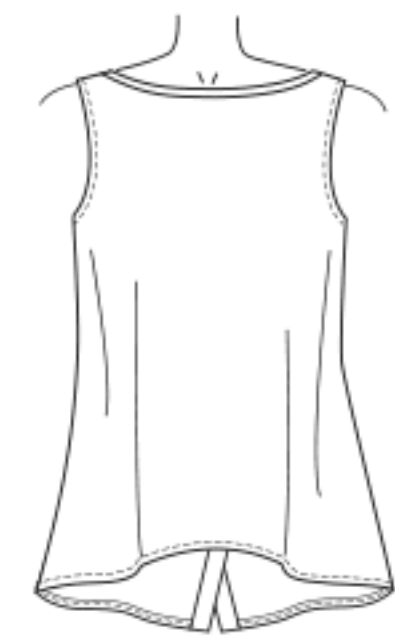
Contrast B - 1¹/₈ yd (1.1 m)

FABRIC 60" (152 cm) WIDE

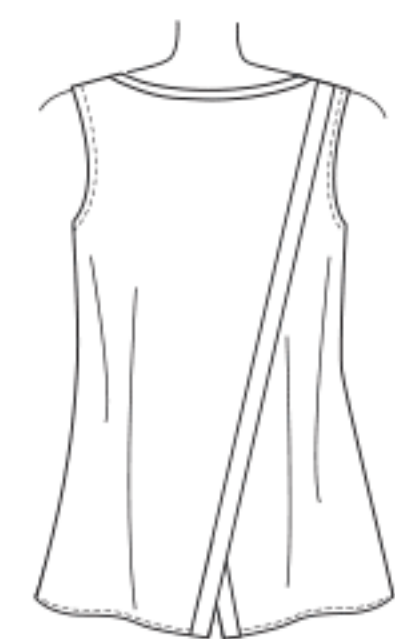
Top A	1 ⁷ / ₈ (1.8)	1 ⁷ / ₈ (1.8)	1 ⁷ / ₈ (1.8)	1 ⁷ / ₈ (1.8)	1 ⁷ / ₈ (1.8)	yd (m)
Top B	1 ¹ / ₈ (1.1)	1 ¹ / ₄ (1.2)	1 ³ / ₈ (1.3)	1 ¹ / ₂ (1.4)	1 ⁵ / ₈ (1.5)	yd (m)

Contrast B - 1¹/₈ yd (1.1 m)

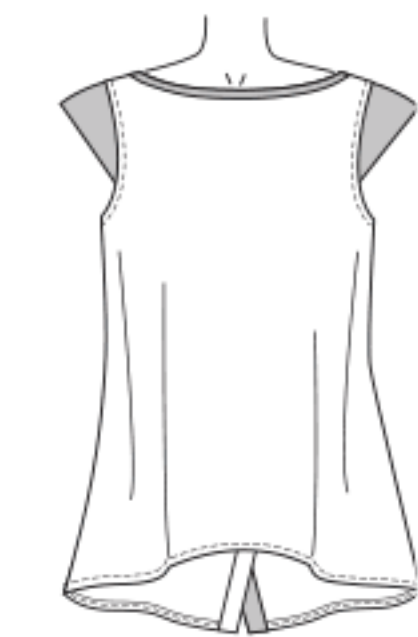
NOTIONS: 1¹/₂ yd (1.4 m) of 1/2" (1.3 cm) Wide single fold bias tape.



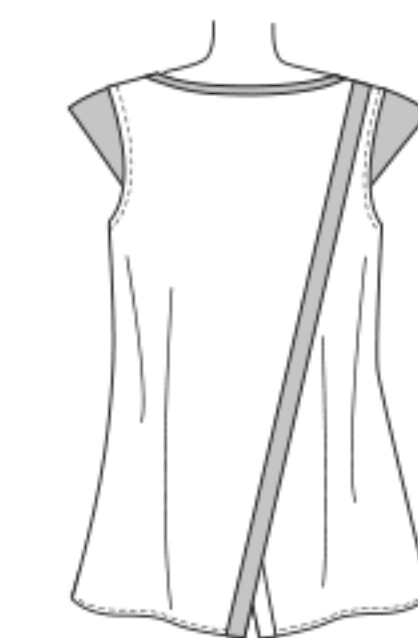
Front A



Back A



Front B



Back B