



# K4178 Misses' Shorts and Pants

XS-S-M-L-XL

Wraparound shorts and pants have an elasticized front that wraps to the back with hook and eye closure and back that wraps to the front with drawstring tie. Narrow hem finish on sides and bottom hem.

**FABRICS:** Designed for light to medium weight woven fabrics.

Suggested Fabrics: Cotton blends, challis, broadcloth, batik. Also for B: Border prints.

## STANDARD BODY MEASUREMENTS:

SIZES:	XS	S	M		XL	
Waist	22 <sup>1</sup> / <sub>2</sub> -23 <sup>1</sup> / <sub>2</sub>	24 <sup>3</sup> / <sub>4</sub> -26	27 <sup>1</sup> / <sub>2</sub> -29	31-33	35-37	"
	57-60	63-66	70-74	79-84	89-94	cm
Hip	32 <sup>1</sup> / <sub>4</sub> -34	35 <sup>1</sup> / <sub>2</sub> -37	38 <sup>1</sup> / <sub>2</sub> -40	41 <sup>1</sup> / <sub>2</sub> -43 <sup>1</sup> / <sub>2</sub>	45-47	"
	82-86	90-94	98-102	106-110	115-120	cm

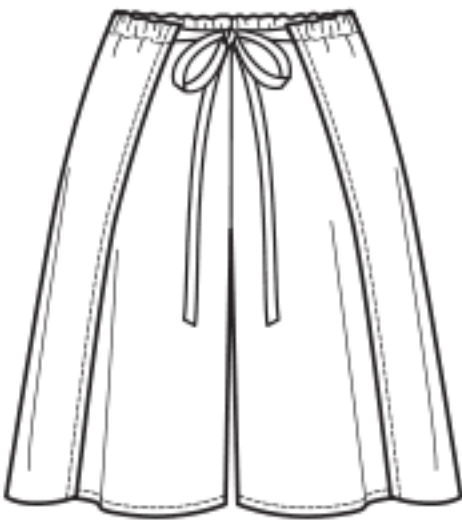
## FINISHED GARMENT MEASUREMENTS:

SIZES:	XS	S	M	L	XL	
Finished Inside Leg Seam						
Shorts A	7 (18)	7 <sup>1</sup> / <sub>2</sub> (19.3)	8 (21)	8 <sup>1</sup> / <sub>2</sub> (22.3)	9 (23)	" (cm)
Pants B	28 (71)	28 <sup>1</sup> / <sub>2</sub> (72.3)	29 (74)	29 <sup>1</sup> / <sub>2</sub> (75.3)	30 (76)	" (cm)

**MATERIAL REQUIRED:** Fabric requirement allows for nap, one-way design or shading.  
Extra fabric may be needed to match design or for shrinkage.

SIZES:	XS	S	M	L	XL	
<b>FABRIC 45" (115 cm) WIDE</b>						
Shorts A	2 <sup>3</sup> / <sub>8</sub> (2.2)	2 <sup>1</sup> / <sub>2</sub> (2.3)	2 <sup>1</sup> / <sub>2</sub> (2.3)	2 <sup>5</sup> / <sub>8</sub> (2.4)	2 <sup>3</sup> / <sub>4</sub> (2.6)	yd (m)
Pants B	4 <sup>1</sup> / <sub>4</sub> (3.9)	4 <sup>1</sup> / <sub>2</sub> (4.2)	4 <sup>5</sup> / <sub>8</sub> (4.3)	5 (4.6)	5 <sup>1</sup> / <sub>8</sub> (4.7)	yd (m)
<b>FABRIC 60" (152 cm) WIDE</b>						
Shorts A	1 <sup>3</sup> / <sub>4</sub> (1.6)	1 <sup>3</sup> / <sub>4</sub> (1.6)	1 <sup>7</sup> / <sub>8</sub> (1.8)	1 <sup>7</sup> / <sub>8</sub> (1.8)	2 (1.9)	yd (m)
Pants B	3 <sup>1</sup> / <sub>4</sub> (3.0)	3 <sup>3</sup> / <sub>8</sub> (3.1)	3 <sup>5</sup> / <sub>8</sub> (3.4)	3 <sup>3</sup> / <sub>4</sub> (3.5)	3 <sup>7</sup> / <sub>8</sub> (3.6)	yd (m)

**NOTIONS:** 1 yd (1.0 m) of <sup>3</sup>/<sub>4</sub>" (2 cm) wide elastic, one hook and eye closure.



Front A



Back A



Front B



Back B